

**Publisher's Note: Ising fluids in an external magnetic field: An integral equation approach
[Phys. Rev. E **69**, 061506 (2004)]**

I. P. Omelyan, I. M. Mryglod, R. Folk, and W. Fenz
(Received 21 October 2004; published 29 October 2004)

DOI: 10.1103/PhysRevE.70.049903 PACS number(s): 64.70.Fx, 05.70.Fh, 64.60.-i, 75.50.Mm, 99.10.Fg

This paper was published online on 16 June 2004 without Fig. 14. This figure is reproduced below for the benefit of the print readership. The paper has been corrected as of 28 October 2004. The figure is missing in the printed version of the journal.

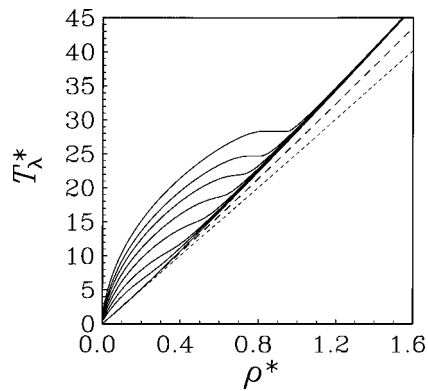


FIG. 14. The para-ferro magnetic coexistence curves evaluated at $H=0$ using the OZ/SMSA/FC theory for the soft-core nonideal Ising fluid with $z_1^*=z_2^*=1$ at different values of the system parameter, namely, top to bottom, $R=0.1, 0.12, 0.14, 0.17, 0.215, 0.29, 0.4$, and ∞ . The results of the HSMF and SCMF approaches are plotted as the short- and long-dashed curves, respectively.